

The Staff

Arborvale Manor Staff meets and exceeds required educational, experience and training guidelines established by the Department of Public Welfare.

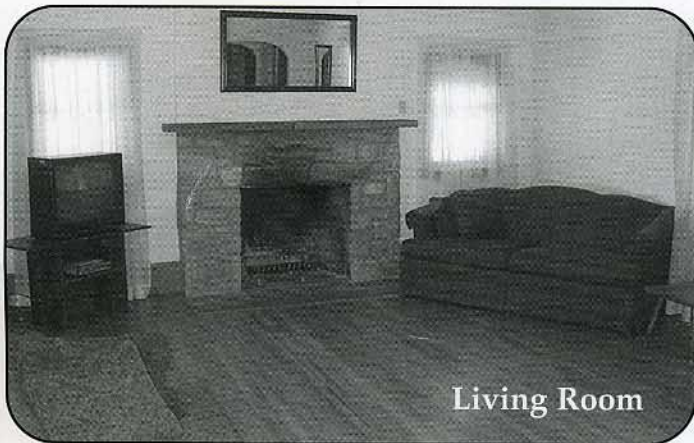
- The Assistant Program Director is responsible for overseeing the daily operation of the facility. The Assistant Program Director coordinates program services, supervises staff, ensures residents are developing life skill competencies and ensures all program objectives are met in accordance with DPW regulations. The Assistant Program Director reports to the Program Director of Residential Services.

- Case Management staff is responsible for ensuring appropriate social services are being provided and that each resident is utilizing



community resources. Case Managers act as a liaison with the placing agency and families, oversee progression of life skills development, develop ISP's and monitor school and job conformance.

- Residential Counselors supervise activities as part of the daily routine, provide a supportive environment for the residents to achieve treatment objectives, enforce program guidelines and facilitate life skill development sessions.



The Facility

The Arborvale Manor facility is located at 2016 Millersville Pike, Lancaster, PA. The 2700 sq. ft. facility provides ample space for eight adolescent



males. Both indoor and outdoor recreational opportunities are provided. The home is situated in close proximity to both Millersville and Lancaster, PA, which is conducive to a vast array of employment opportunities, community and cultural events, recreational activities and educational opportunities.



MISSION STATEMENT:

Arborvale Manor is dedicated to providing its residents with a safe, nurturing community environment and meeting their individual treatment needs with the goal of reunification or a permanent home for each youth.