

Arborvale Manor



Overview

The Arborvale Manor program provides a progressive, life skills centered experience to acquaint male youth with the realities of independent life, encourage personal growth, and to empower youth to make well-rounded decisions. The program also has an emphasis on discharge planning to reintegrate youth into the community of their choice following program completion.

The Program

The Arborvale Manor program is a 6-12 month program serving adolescent males, ages 15-18, who have maintained satisfactory educational progress, have demonstrated the ability to function appropriately with a minimal level of supervision, and have consistently utilized appropriate social skills and coping mechanisms to maintain appropriate interaction with their peers, staff and the community. Residents are expected to maintain gainful employment or volunteer in the community while in the program. A phase system, including a stipend for phase completion, is utilized to measure progress. Arborvale Manor also provides the following services:



- Life Skills Assessments
- Career Interest Inventories
- Vocational Services
- Advanced Living Skills
- Daily Life Skills Education
- Community Outreach Exposure
- Behavioral Management Services
- Case Management Services
- Recreational Activities
- Medical and Dental Care
- Family Involvement in Treatment
- Comprehensive Discharge Planning
- Appropriate Educational Services within the Public School Setting

Program Implementation

Upon admission, a life skills assessment is conducted for each resident to identify areas of training and education to be provided through Individual Service Planning. Residents are offered the opportunity to practice experiential living skills on a daily basis to achieve proficiency.

Comprehensive Training includes:

- Money Management
- Consumer Awareness
- Food Management
- Personal Appearance
- Health Issues
- Housekeeping
- Transportation Planning
- Educational and Career Planning
- Job Seeking Skills
- Job Maintenance Skills
- Emergency and Safety Skills
- Knowledge of Community Resources
- Interpersonal Skills
- Legal Skills
- Leisure Activities
- Housing Arrangements
- Religious Observance



Admission Criteria and Procedures

Adolescent males, ages 15-18, are referred by Pennsylvania's County Children and Youth or Juvenile Probation Agencies. Residents referred for admission generally have a strong need for independent living skills and demonstrate a certain level of social maturity and motivation. Residents must be able to attend the public school system, higher education or GED preparation classes. Residents generally may have had a history of truancy, anger management issues, failed foster care, depression, parent/child conflict, drug and alcohol abuse or lack of structure in their home environment. Referrals are accepted by phoning or e-mailing our office.

The Staff

Arborvale Manor Staff meets and exceeds required educational, experience and training guidelines established by the Department of Public Welfare.

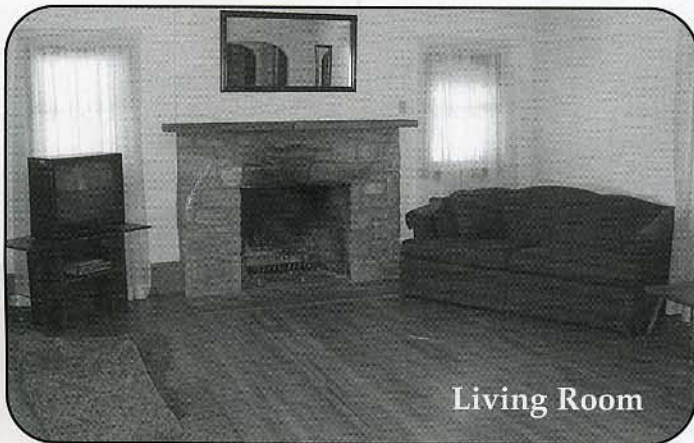
- The Assistant Program Director is responsible for overseeing the daily operation of the facility. The Assistant Program Director coordinates program services, supervises staff, ensures residents are developing life skill competencies and ensures all program objectives are met in accordance with DPW regulations. The Assistant Program Director reports to the Program Director of Residential Services.

- Case Management staff is responsible for ensuring appropriate social services are being provided and that each resident is utilizing



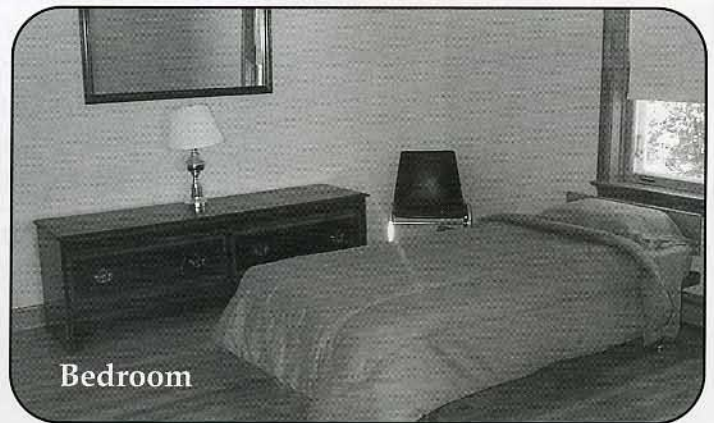
community resources. Case Managers act as a liaison with the placing agency and families, oversee progression of life skills development, develop ISP's and monitor school and job conformance.

- Residential Counselors supervise activities as part of the daily routine, provide a supportive environment for the residents to achieve treatment objectives, enforce program guidelines and facilitate life skill development sessions.



The Facility

The Arborvale Manor facility is located at 2016 Millersville Pike, Lancaster, PA. The 2700 sq. ft. facility provides ample space for eight adolescent



males. Both indoor and outdoor recreational opportunities are provided. The home is situated in close proximity to both Millersville and Lancaster, PA, which is conducive to a vast array of employment opportunities, community and cultural events, recreational activities and educational opportunities.



MISSION STATEMENT:

Arborvale Manor is dedicated to providing its residents with a safe, nurturing community environment and meeting their individual treatment needs with the goal of reunification or a permanent home for each youth.